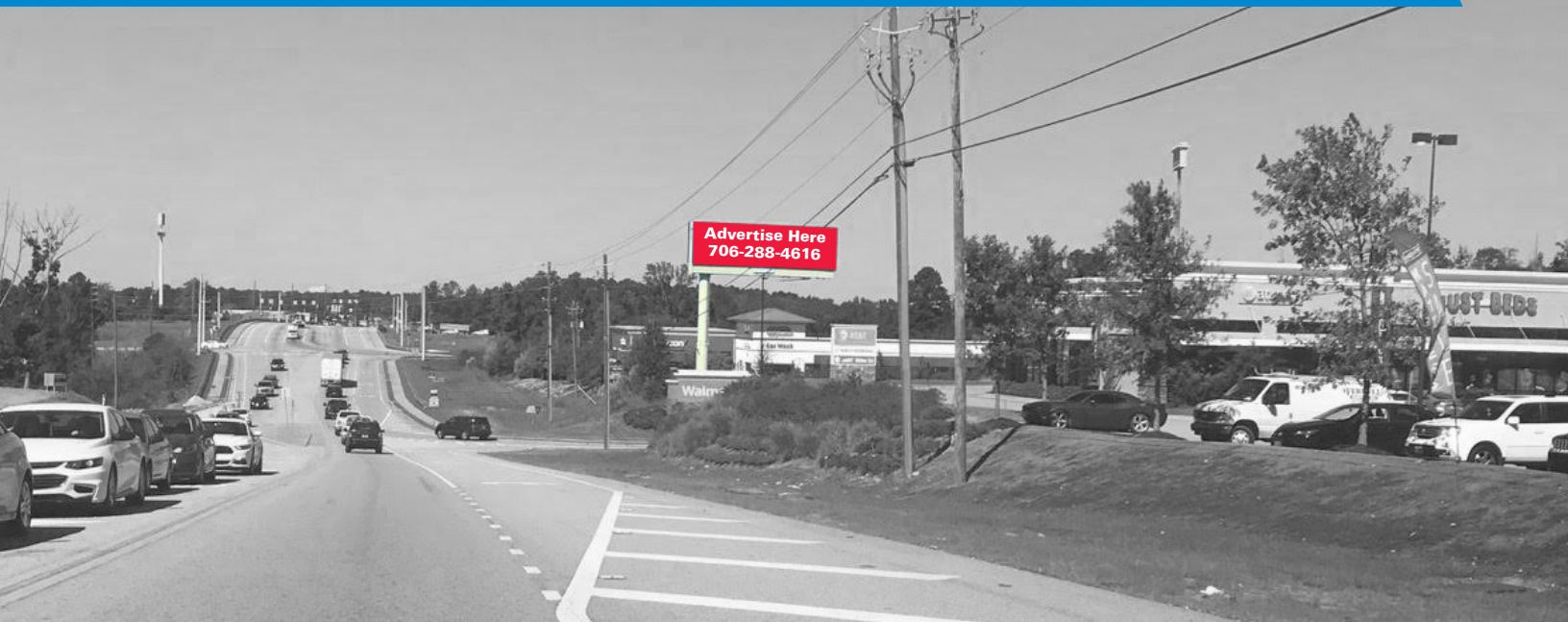


# GA09

## AUGUSTA, GEORGIA

E/S of Lewiston Road South of I-20 Facing South

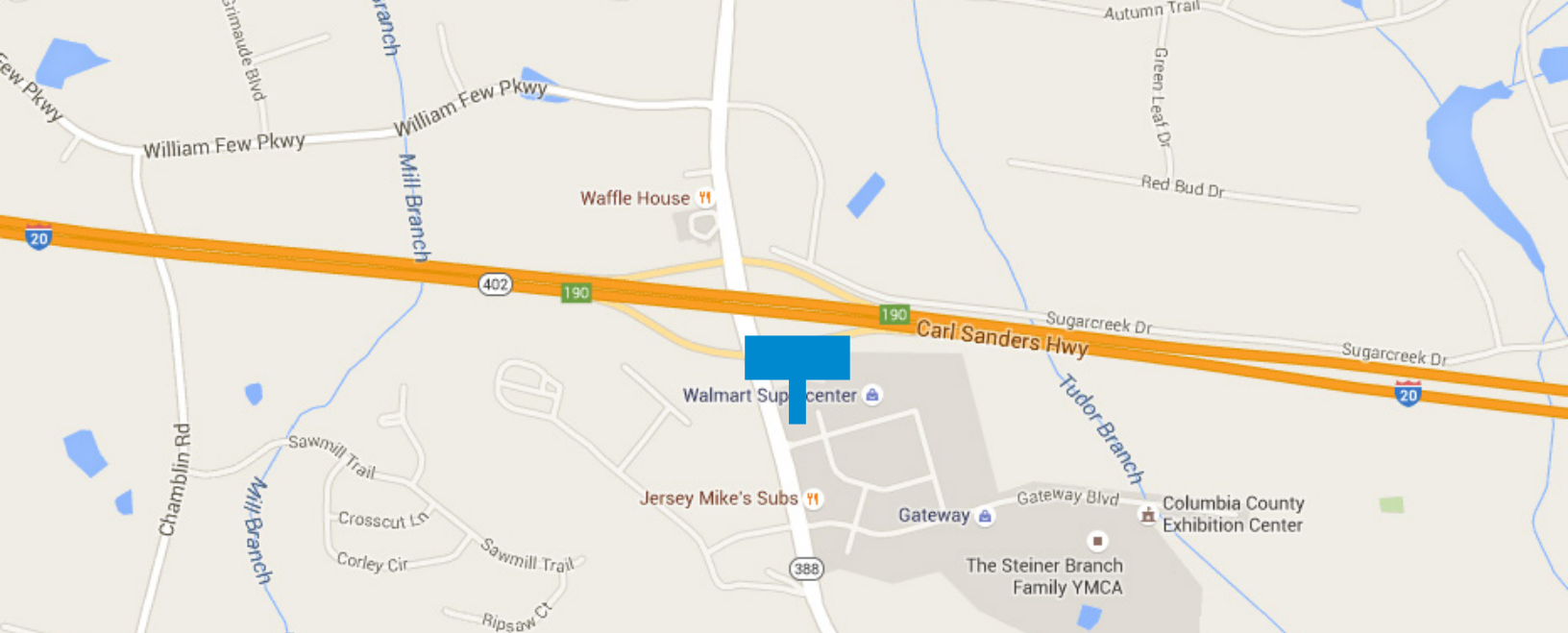


# 14' X 48' LED BILLBOARD

Lat. 33.481169, Long. -82.198257 • 20,900 Daily Traffic Count • 627,000 Monthly

**Be Still**  
DISPLAYS

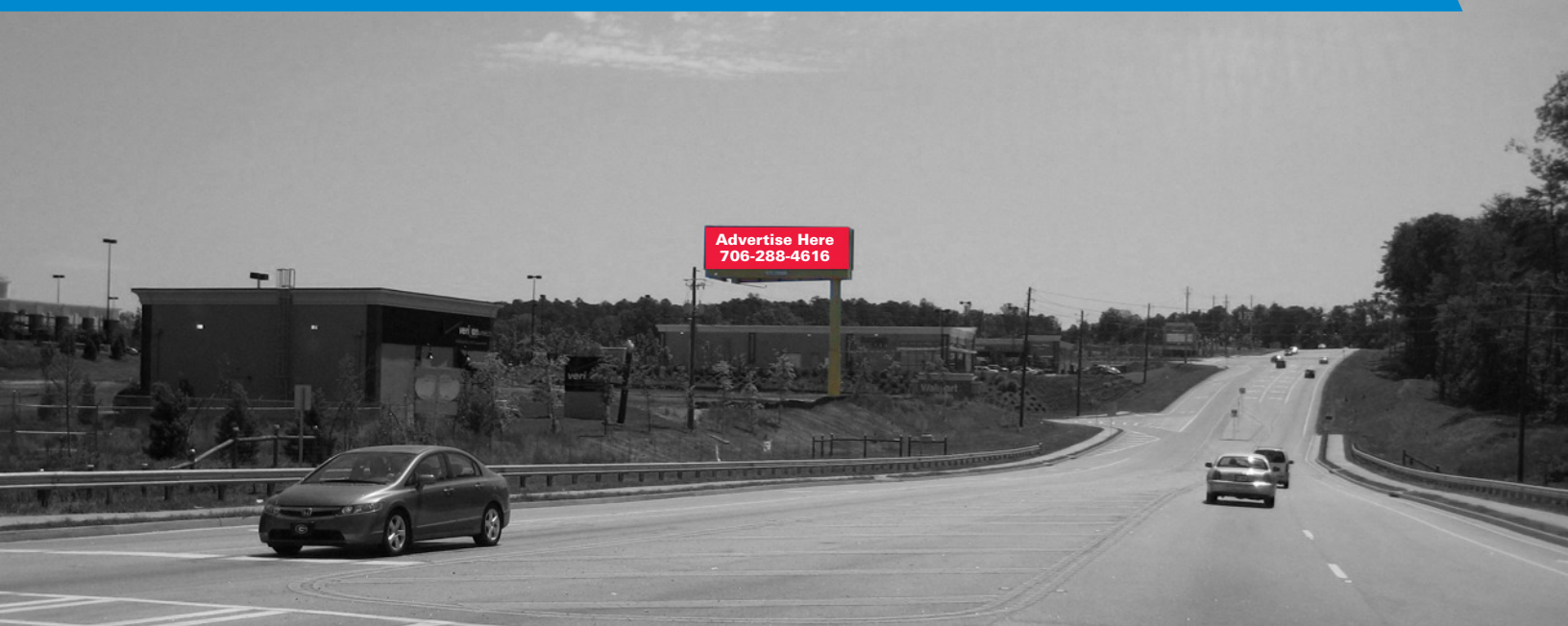
**CHRIS WITHERS**  
706-288-4616  
Chris@bestilldisplays.com  
bestilldisplays.com



# GA09

## AUGUSTA, GEORGIA

E/S of Lewiston Road South of I-20 Facing North



# 14' X 48' LED BILLBOARD

Lat. 33.481169, Long. -82.198257 • 20,900 Daily Traffic Count • 627,000 Monthly

**Be Still**  
DISPLAYS

**CHRIS WITHERS**  
706-288-4616  
Chris@bestilldisplays.com  
bestilldisplays.com